

# RIVERVIEW *Neighborhood Association*

154 Ogden Avenue, Jersey City, NJ 07307 201-876-1980



July 2006

RNA IS NOT AFFILIATED WITH ANY POLITICAL PARTY, ORGANIZATION or ELECTED OFFICIAL

## **202-204 Ogden Ave. Developer to be Guest at the July RNA Meeting**



A representative of the controversial development at 202-204 Ogden will be a guest at the next RNA meeting on July 11 as stipulated by the JC Planning Board. Demolition permits have been issued for removal of the 4th Floor but it has not been completed. At the May Planning Board meeting, the developer stated he could not continue until financing was more stable. Please attend the July 11 RNA meeting to raise any questions or concerns you have about this development with the developer.

## **Hoboken Approves Redevelopment Area in Southwest; Set to Study Parks**

Hoboken recently voted to establish a 13 acre redevelopment zone in the Southwest portion of the city. It will now take the next step and establish a redevelopment plan for the area. It is likely to change the zoning to high-rise from industrial as it has done in the Northwest exacerbating traffic and flooding problems that are too familiar to Heights residents. On June 28th, in response to enormous public pressure, the Council voted to study 7+ acres of property in Southwest Hoboken for acquisition as park land. As this is only a resolution for a study, it is far from being reality. Stay tuned.

## **Community Pressure Leads to Reopening of Reservoir 3**

On June 28, 2006, the Jersey City Reservoir Preservation Alliance (JCRPA) led a rally of several hundred citizens in front of City Hall to protest the lack of community access to Reservoir 3 for tours and other events. Public pressure prevailed and the Council voted in favor of a resolution to sign a licensing agreement with JCRPA.

The City Council has approved access to the Reservoir every weekend from July 8th until October. The long term future of Reservoir 3, however, is still not certain as the City has made no commitments to keep the site as open space. Continued vigilance will be necessary. Look for notice of scheduled events at [jcrreservoir.org](http://jcrreservoir.org).

## **325 Palisades Avenue Redevelopment Plan**

On May 24th, the JC City Council established 325 Palisades Ave. (corner of Ferry) and associated properties (parking lots on Palisades and Ferry St) as "an area in need of redevelopment". The Plan calls for 325 Palisades to be "rehabilitated" as a multi-family apartment building, general offices or medical offices. The lot at the corner of Ferry and New York Ave. is slated for "residential development" and the parking lot on Palisade Ave. is slated for infill housing. The Plan will be available at the July 11th RNA meeting.

## **Community Updates**

**The Cliffs project — 100 Paterson Road:** The developer has not yet obtained a signed agreement to obtain property from the recycling plant (Ponte's) in order to widen Mountain Road. The city can begin condemnation proceedings to secure this property but has not yet done so. An update on the status of this land transfer will be provided at the July 11th RNA meeting.

**Conrad Prize Winner Announced:** Dickinson graduate Anil Parekh is the 2006 winner of the Theodore Conrad Award for High Achievement in History. Anil is an active member of the ROTC and plans to attend Hudson County Community College. The Theodore Conrad Prize was established to honor the memory of Ted Conrad, a founding member of RNA. It is awarded each year to a Dickinson graduate who exhibits high achievement in history studies.

RESERVOIR 3 NOW OPEN!  
LOOK FOR NOTICE OF SCHEDULED EVENTS AT  
JCRESERVOIR.ORG

NON PROFIT  
U.S. POSTAGE  
PAID  
JERSEY CITY, N.J.  
07302  
PERMIT NO. 153  
CAR-RT. PRESORT

RIVERVIEW NEIGHBORHOOD ASSOCIATION  
154 OGDEN AVENUE  
JERSEY CITY, NJ 07307

# COMING EVENTS

## RNA Meeting:

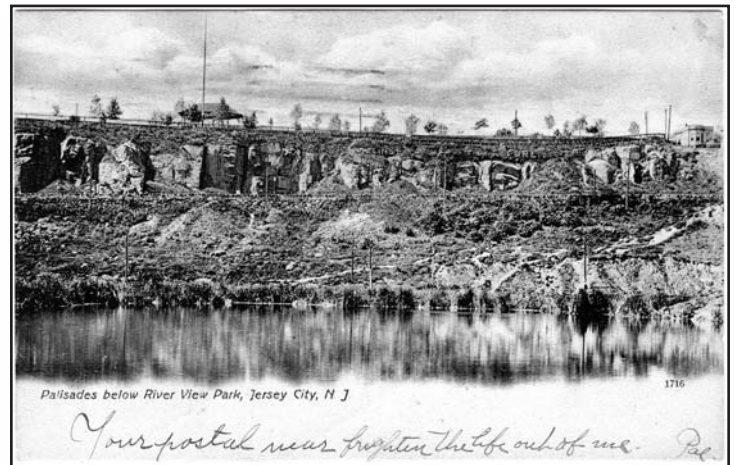
Tuesday, July 11th at 7:30 PM  
Location: Harbor View Health Care Ctr.  
178 Ogden Avenue

## Agenda:

- Police Report & NID
- Guest - Developer of 202-204 Ogden Ave.
- 325 Palisades Ave Redevelopment Plan
- Cliffs Development update

## Membership Dues

Membership dues and donations help sustain the RNA. Annual dues are \$10 for residents and \$15 for those outside RNA boundaries. Please contribute at an RNA meeting or make checks payable to Riverview Neighborhood Association and mail c/o RNA, 154 Ogden Ave., 3E, Jersey City, NJ 07307.



Palisades below River View Park  
1907 Postcard